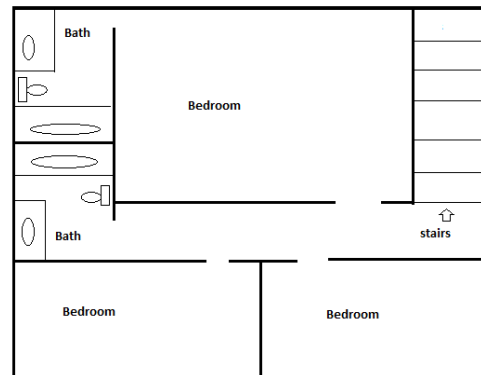
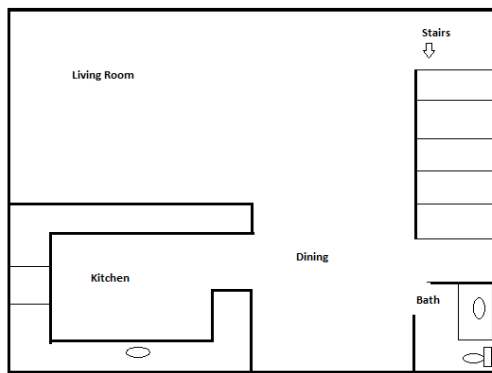


725 Franklin Lane , Vista CA 92084

Looking for space..... Come see our two-level townhome in Vista, CA. These 3 Bedroom 2 1/2 Bath oversized units featuring double-car garages, wash/dryer hookups, with a small fenced yard (These units are approx 1600sf in size). Large kitchens and plenty of space & storage! Located just minutes from downtown Vista with shopping, dining, and entertainment. Just a short drive to beach or Camp Pendleton.

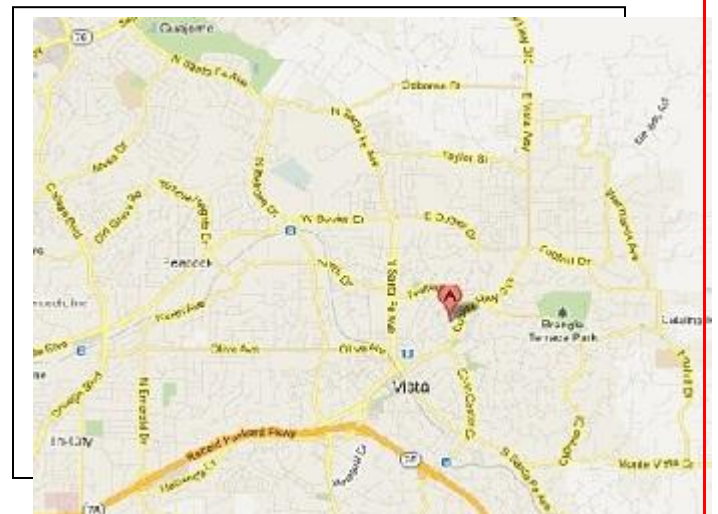
Hurry – these go fast!

3 Bedroom – 2 ½ Bath Townhomes (Approx 1,600 sq ft)
(Note: All floor plans are samples and not to scale)



Amenities:

- 3 bedroom 2 1/2 bath floor plans
- Double-car private Garage
- Private fenced yard area
- Large kitchens
- Washer & Dryer hookups
- Easy Freeway access
- Close to downtown Vista w/shopping, dining & entertainment



Office # (760) 758-1404

Please call for appointment (do not disturb tenants)

www.advancedbuildersproperties.com