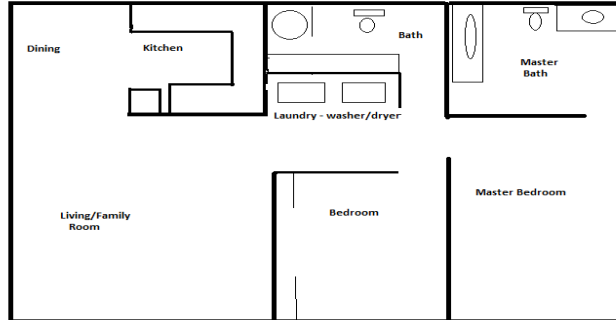


741-763 Franklin Lane, Vista CA 92084

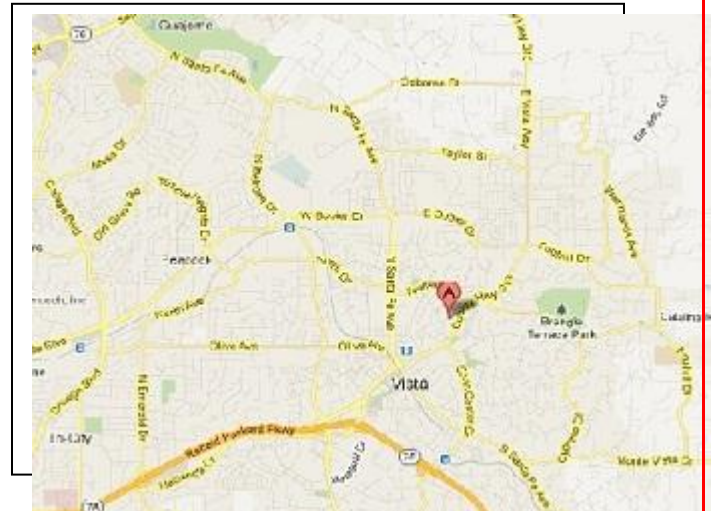
Atina Duplexes are situated at the end of a private cul-de-sac road. Located near downtown Vista, you are secluded yet city close. Featuring spacious 2 bedroom 2 bath floor plans with private garages. Each unit has washer & dryer hookups inside the unit... no need to carry your laundry around! Home living, great prices!

2 Bedroom – 2 Bath Duplexes (Approx 1,000 sq ft)
(Note: All floor plans are samples and not to scale)



Amenities:

- 2 bedroom 2 bath floor plans
- Private Garage
- Fully Equipped kitchens
- Washer & Dryer hookups
- On private cul-de-sac
- Easy Freeway access
- Close to downtown Vista w/shopping, dining & entertainment



Office # (760) 758-1404

Please call for appointment (do not disturb tenants)

www.advancedbuildersproperties.com